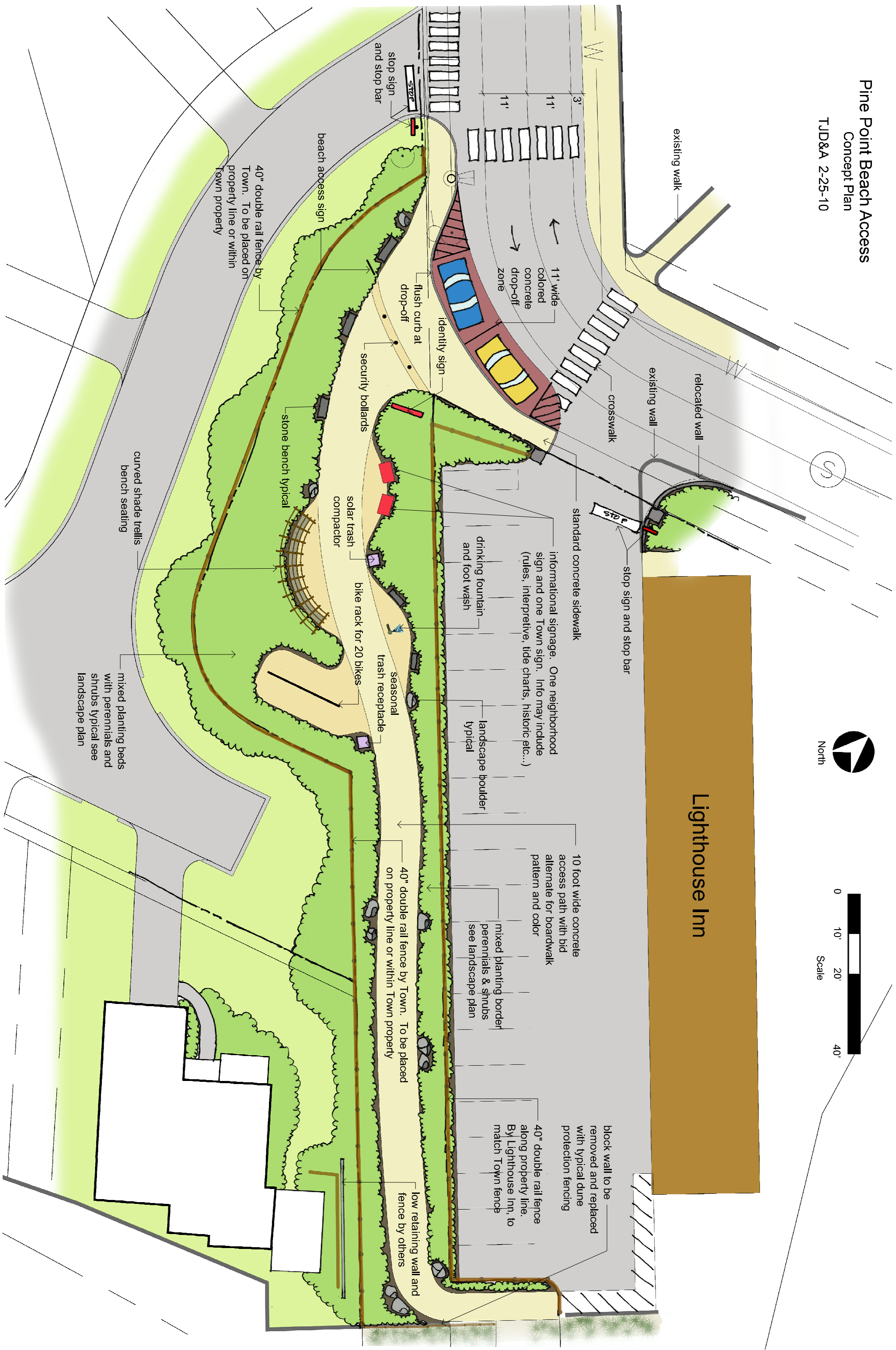
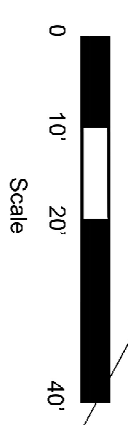


Pine Point Beach Access
 Concept Plan

TJD&A 2-25-10



Lighthouse Inn

standard concrete sidewalk

informational signage. One neighborhood sign and one Town sign. Info may include (rules, interpretive, tide charts, historic etc...)

drinking fountain and foot wash

bike rack for 20 bikes

solar trash compactor

seasonal trash receptacle

security bollards

identity sign

flush curb at drop-off

stone bench typical

curved shade trellis

bench seating

10 foot wide concrete access path with bid alternate for boardwalk pattern and color

landscape boulder typical

40" double rail fence by Town. To be placed on property line or within Town property

mixed planting border perennials & shrubs see landscape plan

block wall to be removed and replaced with typical dune protection fencing

40" double rail fence along property line. By Lighthouse Inn, to match Town fence

low retaining wall and fence by others

40" double rail fence by Town. To be placed on property line or within Town property

mixed planting beds with perennials and shrubs typical see landscape plan